

Brillia HD LH-PJ

Medium Run Length Digital Thermal Plates

FASTER PRESS APPROVALS
less waste, cost savings.



A positive-working, no-bake thermal plate, Fujifilm's Brillia High Definition (HD) LH-PJ dramatically improves on press performance, while simultaneously providing excellent durability. By employing a proprietary MultiGrain surface structure, the LH-PJ plate provides exceptional reduced ink/water balance, giving you sharper, cleaner and drier sheets; faster makereadies; quicker restarts and reduced ink usage. In short, it's all about faster press approvals, less waste and cost savings.

Fujifilm's LH-PJ plate is designed to work with a revolutionary intelligent "Z" processing technology, which greatly improves plate production speed and consistency and eliminates over-replenishment in controlling process activity. With the "Z" processor, LH-PJ plates are always processed under optimal conditions.

Fujifilm is committed to continuous improvement in helping you increase prepress and press productivity and the Brillia HD LH-PJ plate is built upon the tradition of excellence Fujifilm has established over many years in producing plates for the graphic arts industry.

Brillia HD LH-PJ Thermal Plate Features

- MultiGrain surface structure for optimum ink/water balance
- Medium run length (up to 300,000 impressions)
- No baking required
- 10 micron stochastic certified
- Excellent UV printing capability
- 1-99% @ 200 lpi conventional and 300 lpi FM & Hybrid screening technologies
- Elimination of frequent CTP calibration
- No ablation dust

Brillia LH-PJ

A NEW GENERATION THERMAL CTP PLATE

New Fujifilm technology achieves:

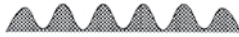
- Wider ink/water balance with NEW Enhanced MultiGrain
- Better scuff resistance for prepress handling
- Excellent tone reproduction for high definition printing
- Lower chemical cost with “ZAC” control system



ENHANCED MULTIGRAIN



Mono Dispersion Large Grain



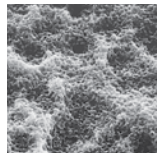
Medium Grain



Micro Grain



Micro Pore



FLH-Z Processor “Z” Plate Processor

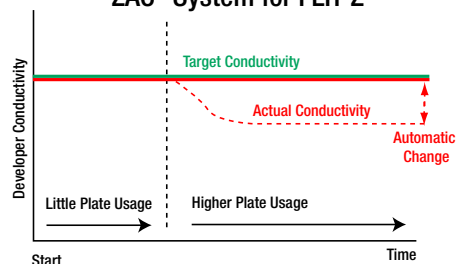
Designed to provide greater prepress productivity, Fujifilm has introduced the unique “Z” plate processor. This revolutionary intelligent processor utilizing ZAC technology monitors conductivity and precisely controls activity, resulting in increased chemistry life, decreased effluent and reduced costs.

The FLH-Z processor features:

- Faster plate processing
- Accurate monitoring of conductivity and control of activity
- Unparalleled developing consistency – “50% is a 50%”
- Eliminates SCRUBroller pressure dot development variation
- Significantly less processing chemical consumption
- Reduced effluent discharge
- Decreased processor maintenance
- Greater intervals between chemical changes
- Optional remote monitoring of all processor functions with Fujifilm’s Taskero Universe



“ZAC” System for FLH-Z



SPECIFICATIONS:

FUJIFILM'S PROPRIETARY MULTI-GRAIN TECHNOLOGY

All Brillia plates are made by applying a complex grain structure, consisting of primary grains, honeycomb grains and micropores, to an aluminum support. This “MultiGrain” structure produces a synergistic effect that results in:

- Outstanding printing efficiency
- Rich tone reproduction
- Long press life
- Simple platemaking

RICH TONE REPRODUCTION

Fujifilm Brillia plates offer exceptional dot resolution in highlight, midtone and shadow areas, with a minimized dot gain ratio and superior print quality.

CLEAN WORKING ENVIRONMENT

Fujifilm has produced the cleanest plate system available. Neither plate nor processing solutions are harmful to the environment.

EXCELLENT INK AND WATER BALANCE

A unique MultiGrain aluminum structure provides water receptivity that ensures an easy-to-maintain ink and water balance, plus minimum dot gain on press, and less piling to reduce paper waste.

TOTALLY AQUEOUS

Fujifilm offers the first complete plate system which utilizes only aqueous chemicals, from short-run duplicator to long-run web.

THE FUJIFILM GREEN POLICY

We at Fujifilm believe that “sustainable development” of the Earth, mankind, and companies in the 21st century is an issue that must be addressed with the highest priority. As a socially responsible corporation, we actively undertake corporate activities with our environmental values in mind. We strive to be a dedicated steward of the environment and assist our customers and corporate partners in doing the same.



FUJIFILM group
Green Policy

FUJIFILM

LH-PJ_08_1